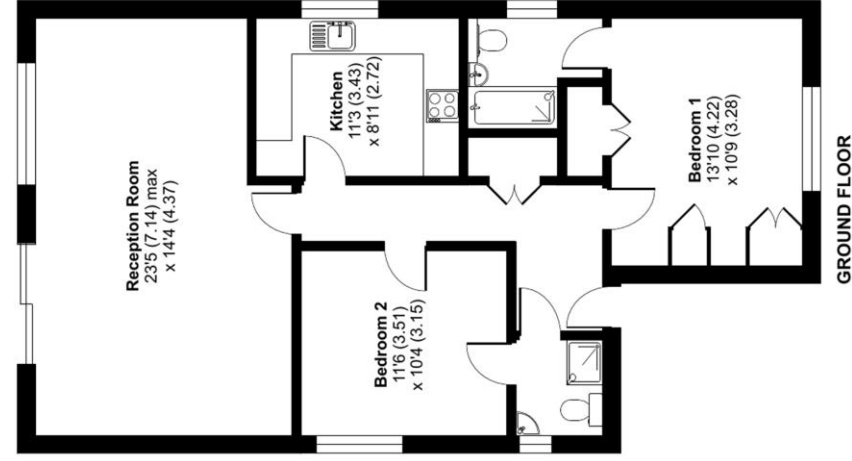


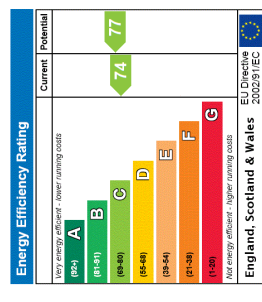


Derby House, Chesswood Way, Pinner, HA5

Approximate Area = 893 sq ft / 82.9 sq m
 For identification only - Not to scale



Pinner Office Sales & Lettings
 13 Bridge Street, Pinner,
 HA5 3HR
 T: 020 8866 2300
 sales@rawlinsongoldpinner.com
 www.rawlinsongoldpinner.com



Important Notice

We have prepared these property particulars as a general guide to a broad description of the property. They are not intended to constitute part of an offer or contract. We have not carried out a structural survey and the services, appliances and specific fittings have not been tested. All photographs, measurements, floorplans and distances referred to are given as a guide only and should not be relied upon for the purchase of carpets or any other fixtures or fittings. Lease details, service charges and ground rent (where applicable) and council tax are given as a guide only and should be checked and confirmed by your Solicitor prior to exchange of contracts. The copyright of all details, photographs and floorplans remain exclusive to Rawlinson Gold.

Key Features & Description

- Ground floor flat
- Spacious reception room
- Fitted kitchen
- Two double bedrooms
- Two bathrooms
- Communal grounds
- Garage and residents parking
- Close to the Metropolitan line
- Walking distance to shops

Set in a popular development close to shops and transport links, this ground floor apartment is perfect for those seeking a lifestyle of convenience and comfort.

The property briefly comprises an entrance hallway, a bright and spacious reception room with doors opening to the outside, and a fitted kitchen. Completing the property is the master bedroom with an en-suite, a second bedroom and a shower room. Additional benefits include communal gardens, a garage and ample residents parking.

Derby House is located just a short distance from an array of shops, eateries, coffee houses and supermarkets. Within the local area are several bus routes and Pinners Metropolitan Line station, offering direct access into Central London and beyond. Close by are a number of popular schools and Montesole playing fields.

